



Pierre-Fort Pierre Bridge Newsletter

Aug. 15, 2024 | Issue 93



**Lt. Cmdr. John C. Waldron Memorial
Bridge Pierre & Fort Pierre, S.D.**

Bridge Project Update

With the end of summer on the horizon, crews are working as hard as ever across the entire jobsite. With traffic successfully flowing in a two-way configuration on the new westbound lane, crews are focusing on the final stages of the bridge deck, the eastbound lanes, and the east and west approaches.

On the Ft. Pierre side, crews have recently removed substantial portions of the existing bridge's approach, and have placed portions of the new approach slabs. Excavation and undercutting are complete, allowing for the placement of backfill and gravel cushion in preparation for the rest of the new eastbound lanes. Also, the Island Drive reconfiguration is progressing with the rest of the west side's work.

On the south side of the bridge deck, placement of the pedestrian separation rail is complete. As crews finish painting this rail, they're also preparing for the installation of the pedestrian handrail. The handrail itself will be wired with built-in illumination across the entire deck span of the pedestrian pathway. Also upcoming on the south side are luminaire poles, reflecting the currently installed luminaire poles on the north side of the bridge deck. Remaining concrete formwork is also in progress, with crews placing forms for the upcoming belvederes. These belvedere areas will allow for people to rest or take in the view of the river without impeding walkers and cyclists.

Over on the Pierre side, crews are removing existing concrete and soil in preparation for the placement of the new eastbound lanes. Currently, newly engineered soil is being hauled in to meet this need.

As always, we remind all motorists, boaters, and pedestrians to stay vigilant throughout the entire construction zone!

Keep up to date on photos, videos, and construction progress by visiting <https://www.Pierre-FtPierreBridge.com>.



*New approach slabs, earthwork, and reconfiguration
on the Ft. Pierre side, Aug. 12, 2024.*

bridgeinfo@projectsolutionsinc.com

605.391.8732

www.Pierre-FtPierreBridge.com



We are just a click away!
Follow us on social media.



@SouthDakotaDOT





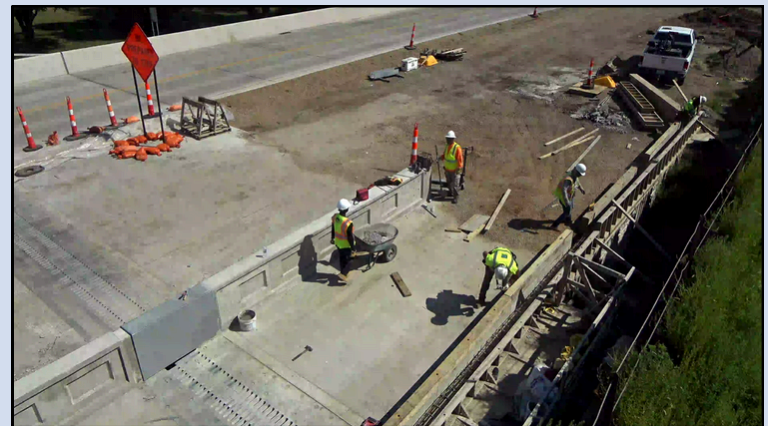
Freight moving successfully across the new bridge as crews work on the bridge deck, Aug. 07, 2024.



Traffic flows through the westbound lane as crews operate in the eastbound lane, Aug. 12, 2024.



Belvedere formwork installation, Aug. 12, 2024.



Installing concrete forms and completing prep work on the Pierre side, Aug. 08, 2024.



Island Drive reconfiguration progressing alongside approach work on the Ft. Pierre side, Aug. 12, 2024.



Existing bridge columns, capitals, and bent caps alongside new bridge versions, Aug. 12, 2024.