



Pierre-Fort Pierre Bridge Newsletter

Mar. 14, 2024 | Issue 82

Lt. Cmdr. John C. Waldron Memorial Bridge Pierre & Fort Pierre, S.D.

Bridge Project Update

Teams of bridge workers are as busy as ever with spring just around the corner. The future westbound lanes of the new bridge continue to receive plenty of focus, with approach and barrier rail work continuing in addition to preparation for the four remaining concrete bridge deck pours.

In our last issue, we discussed the importance of finger joints and their integration into the overall hardscape of the new bridge. On the Pierre side, this joint installation is nearly complete, and work on the approach adjacent to the finger joint has resumed. Similar to the function of the joints, an additional slab will be poured—one that integrates with the approach slab and essentially becomes an extension of the bridge itself. In reality, the total structure of the bridge extends from the end of one approach to the other, and from the bridge deck to below the piers.

Additionally, since motorists will still be driving on the existing bridge through the summer months, SDDOT bridge engineers continue their annual inspections of the existing bridge. These annual inspections identify any repairs needed and ensure the integrity of the bridge and safety of the traveling public. Once the new bridge is constructed, it will also be routinely inspected. These inspections will be consistent with national bridge inspection standards required for all structures.

Keep up to date on photos, videos, and construction progress by visiting <https://www.Pierre-FtPierreBridge.com>.



Workers on articulated boom lift inspecting the old bridge, March 11, 2024.

bridgeinfo@projectsolutionsinc.com

605.391.8732

www.Pierre-FtPierreBridge.com



We are just a click away!
Follow us on social media.

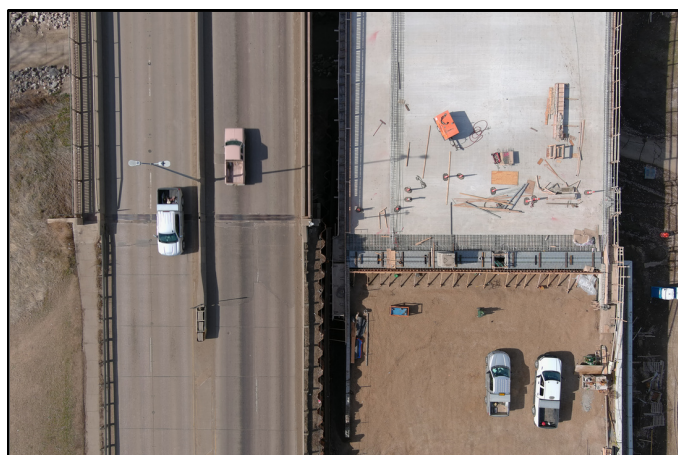


@SouthDakotaDOT





Skid steer and compactor grading the Pierre approach, March 12, 2024.



Finger joints above Pierre side abutment, March 11, 2024.



Workers on articulated boom lift inspecting the old bridge, March 11, 2024.



Transport barge with hydraulic stabilizers used as work area, March 11, 2024.



Workers on articulated boom lift inspecting the old bridge, March 11, 2024.



Traffic control components staged for upcoming season, March 11, 2024.