



Pierre-Fort Pierre Bridge Newsletter

Feb. 16, 2024 | Issue 80

Lt. Cmdr. John C. Waldron Memorial Bridge Pierre & Fort Pierre, S.D.

Bridge Project Update

As we continue to progress through the winter season, critical supportive work is underway. With the abutments, bridge deck, and eastern approach in place and substantially completed, attention has shifted to connective, decorative, and safety elements of the new bridge. Staging and preparatory work for the warmer seasons is also progressing.

On the bridge deck, workers continue to place rebar in anticipation of the barrier rail on the upstream side and the barrier rail/pedestrian area on the downstream side.

Additionally, the upcoming electrical conduit will serve the primary lighting for vehicles as well as the illuminated foot and bicycle path.

On the Pierre side of the new bridge, where the abutment meets the approach slab, workers are preparing for the installation of fabricated steel joints. These joints, used at this critical connective area, are one of the many marvels of bridge engineering. As the weather changes over the course of a year, steel can expand and contract depending on warmer or colder temperatures.

By installing specifically designed steel joints at key points on either end of the bridge, the bridge itself gains a significant measure of adaptability to extreme changes in weather.

Keep up to date on photos, videos, and construction progress by visiting <https://www.Pierre-FtPierreBridge.com>.



Rebar placement for the upstream side barrier rail, Feb. 13, 2024.

bridgeinfo@projectsolutionsinc.com

605.391.8732

www.Pierre-FtPierreBridge.com



We are just a click away!
Follow us on social media.

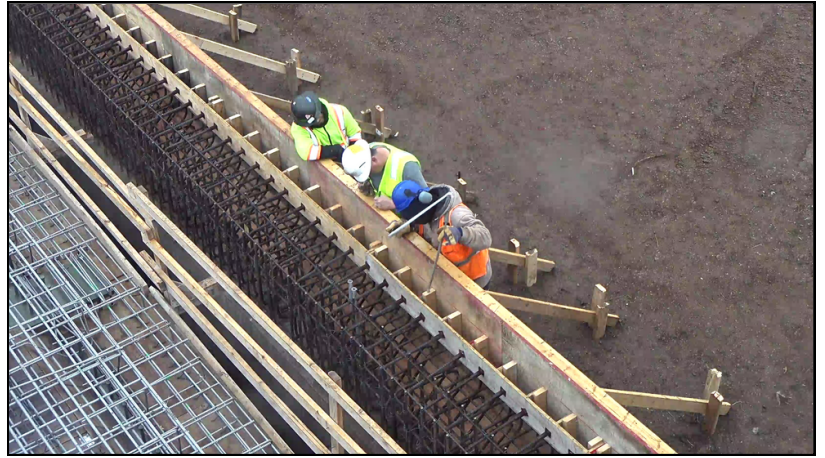


[@SouthDakotaDOT](https://www.facebook.com/SouthDakotaDOT)





Workers plan for the installation of finger joints on the Pierre side, Feb. 13, 2024.



Workers inspect intersection of approach slab and deck above the abutment on the Pierre side, Feb. 7, 2024.



Wood forms and rebar placement in the pedestrian area on the downstream side, Feb. 13, 2024.



Worker installs rebar placement for upcoming barrier rail, Feb. 12, 2024.



Fabricated material waits for installation in the staging area on the Ft. Pierre side, Feb. 13, 2024.