



Pierre-Fort Pierre Bridge Newsletter

Feb. 1, 2024 | Issue 79

Lt. Cmdr. John C. Waldron Memorial Bridge Pierre & Fort Pierre, S.D.

Bridge Project Update

Heading into February, crews are making daily progress on the east/west abutments and on the north side of the bridge deck.

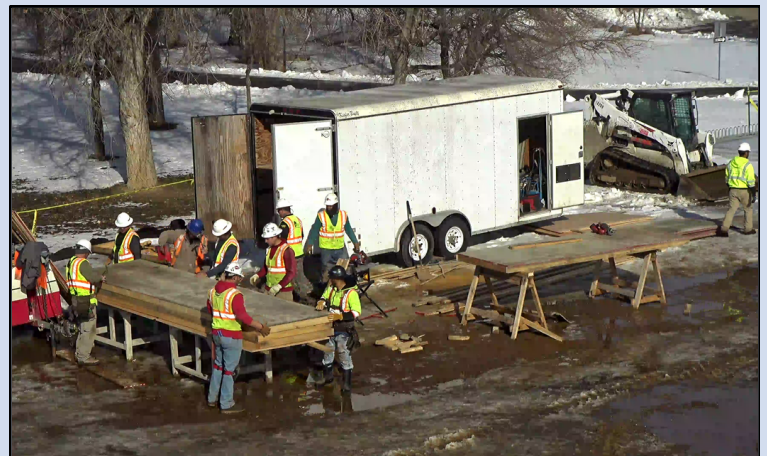
With the early 2024 South Dakota weather unfolding as unpredictably as ever, workers faced sub-zero temperatures and freezing winds during the publication of our last issue. In this issue, we're reporting on temperatures approaching 50°!

However, crews and project managers know this warm winter weather won't last and are adjusting in real-time to ensure a balance of progress and safety.

Concrete pours continue to fill out wing wall portions on the abutments. Additionally, placement forms and superstuds continue to be disassembled on the Pierre side for use on the Ft. Pierre side. Focusing on approach work, abutment work, and proper relocation and staging of materials during this season is crucial to ensure a quick start to more complex efforts once the winter ice is finally gone for the year.

Crews are also progressing with preliminary construction of north-facing elements of the bridge, including forms for the upcoming bridge railing, decorative window areas, and electrical conduit. In particular, the future railing and conduit will provide critical safety features for pedestrians, motorists, and boat pilots.

Keep up to date on photos, videos, and construction progress by visiting <https://www.Pierre-FtPierreBridge.com>.



Workers construct deck railing forms, Jan. 30, 2024.

bridgeinfo@projectsolutionsinc.com

605.391.8732

www.Pierre-FtPierreBridge.com



We are just a click away!
Follow us on social media.



@SouthDakotaDOT





Overhead view of barge cranes and river ice barrier, Jan. 30, 2024.



Barges support forklifts during superstud relocation, Jan. 30, 2024.



Panoramic view from the north side of the new bridge, Jan. 30, 2024.



Railing forms on the new bridge's north side, Jan. 30, 2024.



Eastern approach, Pierre side, Jan. 30, 2024.